

Field of activity Steel & metallurgical sector

Project **Continuous Head Hardening of Rail (CHHR) machine, Gijón (SPAIN)**

Year 2011

Location Gijón (SPAIN)

Client **ARCELORMITTAL**

Facility features

- Rails: 14 different types
- Maximum rail length: 72 m
- Machine length: 101,2 m
- Nº modules: 35
- Upper guide system: Pneumatic, 68 cylinders with integrated valves
- Side guide system: Manual (automatic option through screws)
- Translation: drives
- Water network: 500 m³/h
- Cooling circuits: 35 independent circuits

Scope/description:

Basic and detail engineering, supplies, manufacturing, workshop pre-assembly, transport, assembly on worksite and commissioning of a modular machine to obtain continuous head hardening of rail, developed based on an ArcelorMittal cooling process which allows these rail heads to get a higher hardness than the conventional ones.

The design allows its complete manufacturing in the workshop and the subsequent easier transport to its final location in grouped modules, minimizing the commissioning works and with a higher quality.



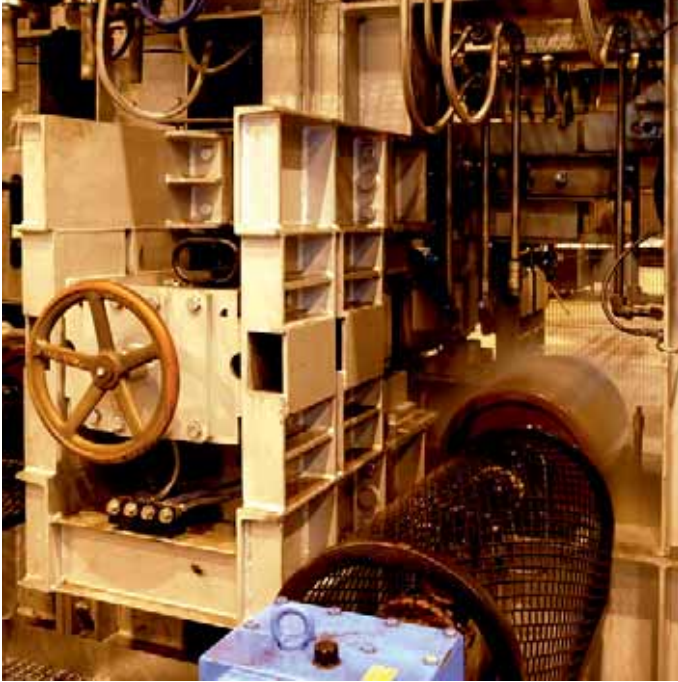
Field of activity Steel & metallurgical sector

Project **Continuous Head Hardening of Rail (CHHR) machine, Gijón (SPAIN)**

Year 2011

Location Gijón (SPAIN)

Client **ARCELORMITTAL**



Field of activity Steel & metallurgical sector

Project **Continuous Head Hardening of Rail (CHHR) machine, Gijón (SPAIN)**

Year 2011

Location Gijón (SPAIN)

Client **ARCELORMITTAL**

